



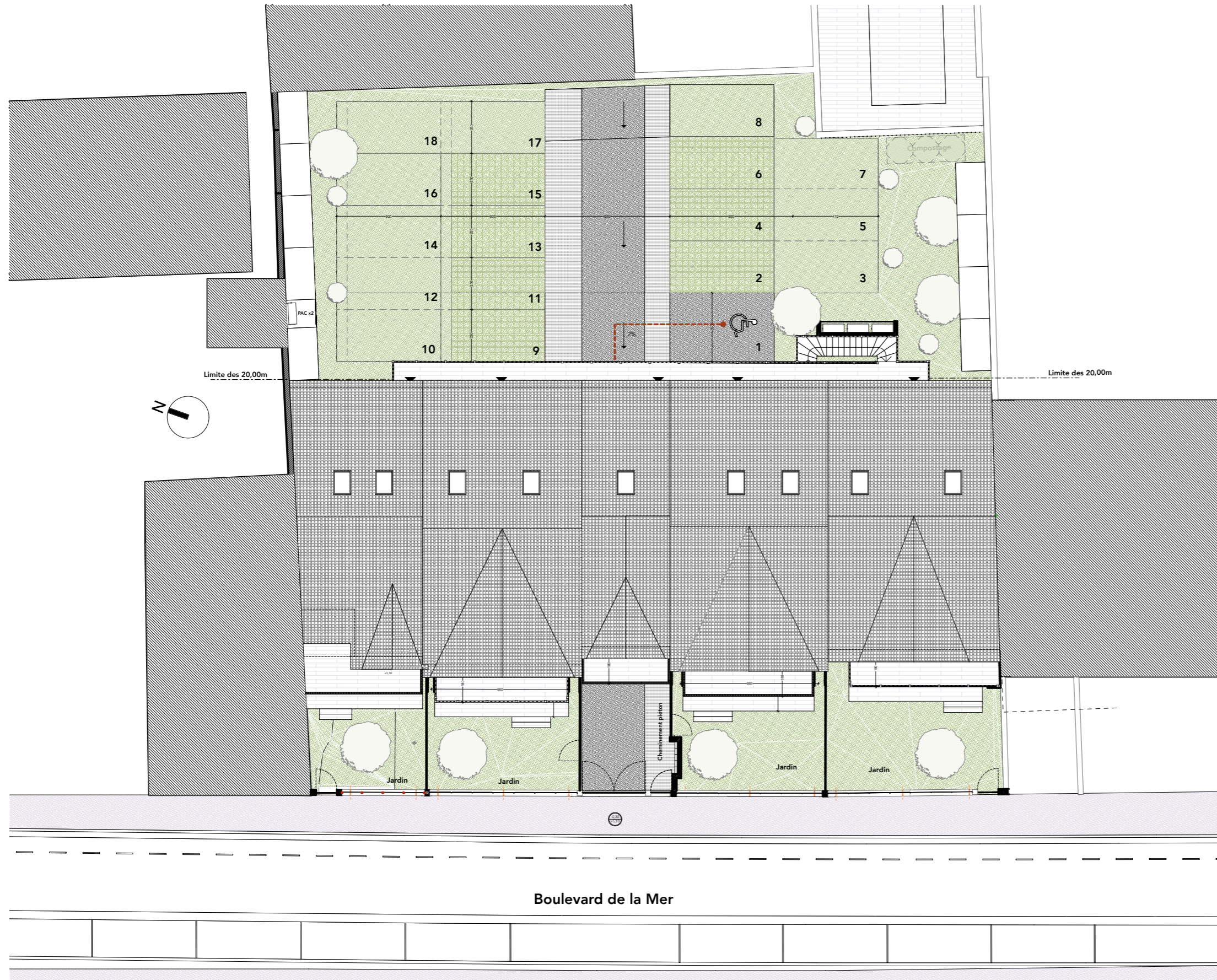
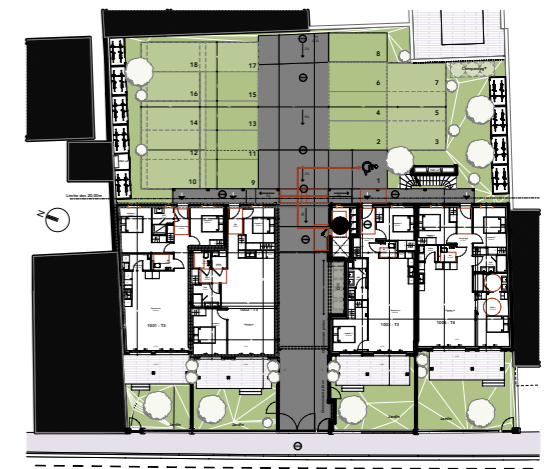
VILLA MARINE



11 Boulevard de la Mer
17340 CHATELAILLON-PLAGE

PLAN DE COMMERCIALISATION PROVISOIRE

Plan Masse



- sol fini logement
- sol fini mezzanine
- terrasse / balcon bois exotique
- jardin / espaces enherbés
- clôture grillagée
- brise vue

